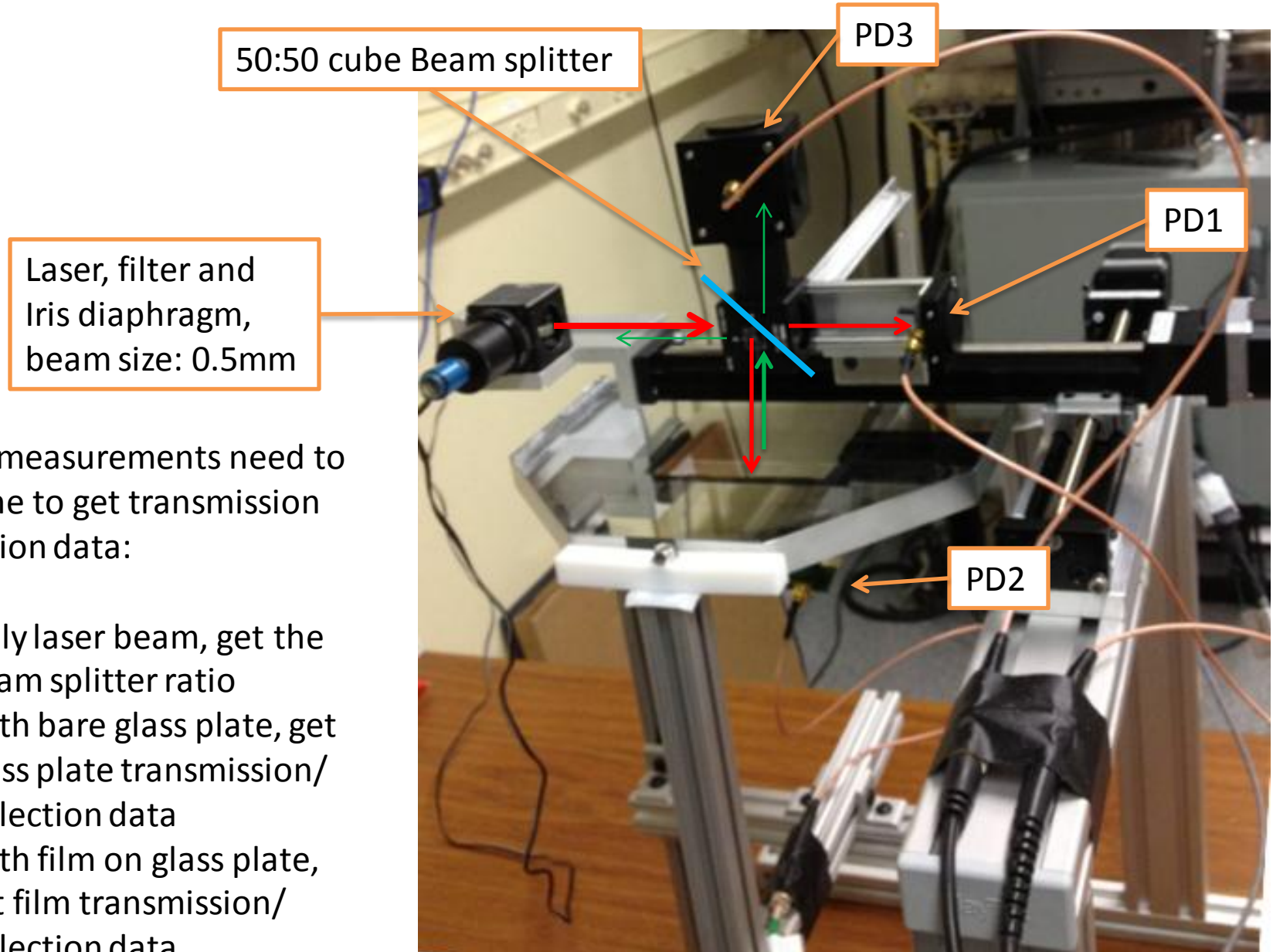


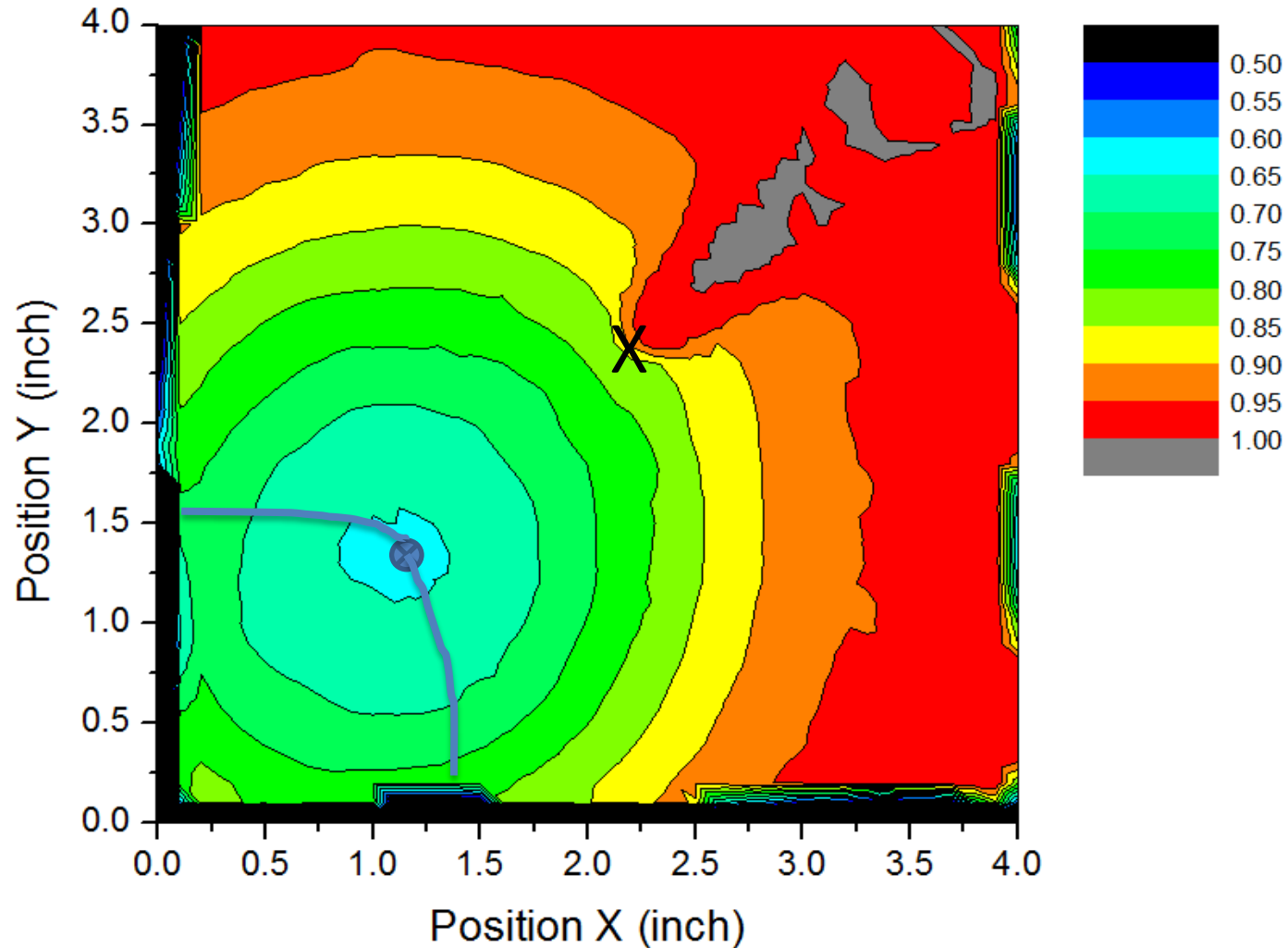
Transmission/Reflection measurement set up



Three measurements need to be done to get transmission reflection data:

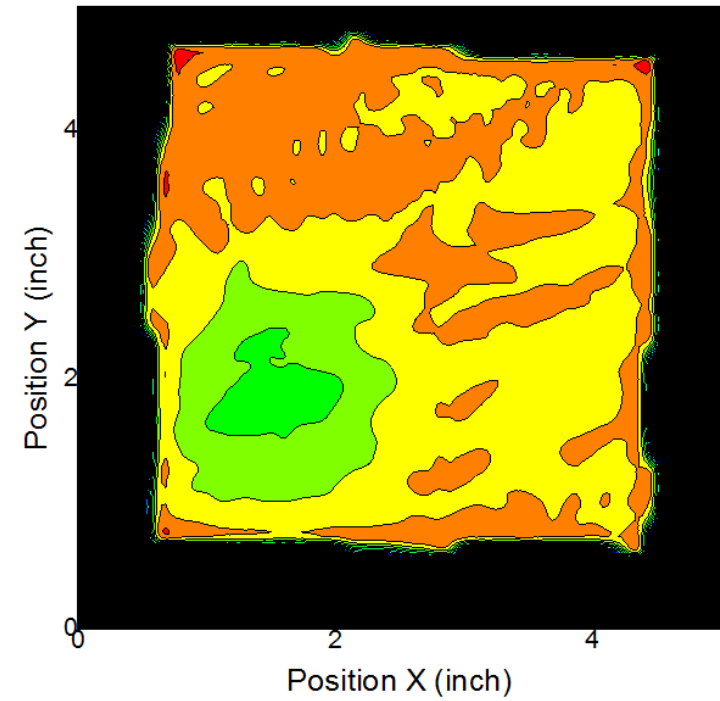
1. Only laser beam, get the beam splitter ratio
2. With bare glass plate, get glass plate transmission/reflection data
3. With film on glass plate, get film transmission/reflection data

Sb film transmission map

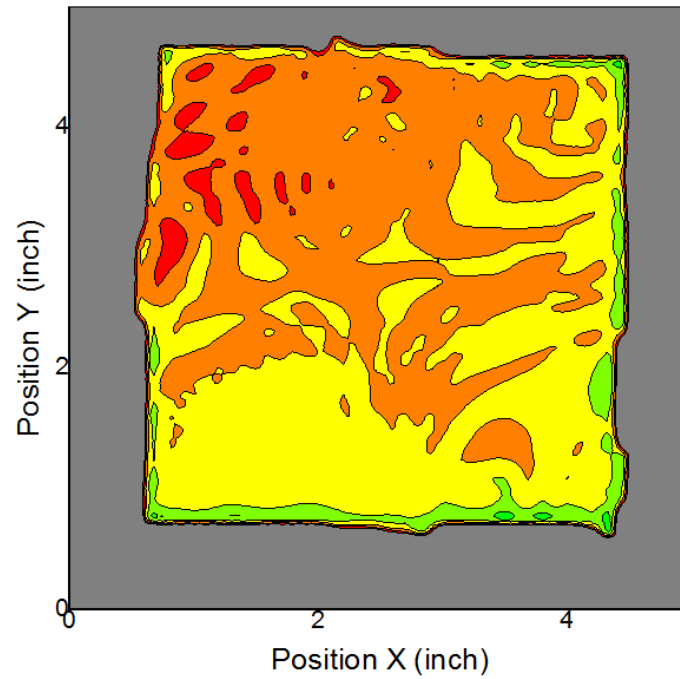
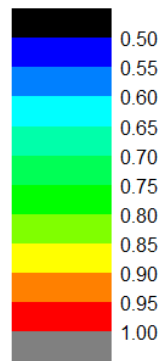


- Center X: Lighting rod, which affect the Sb film deposition
- The lower the transmission, the thicker the Sb film.

Transmission/Reflection Data



Transmission map



Reflection map

