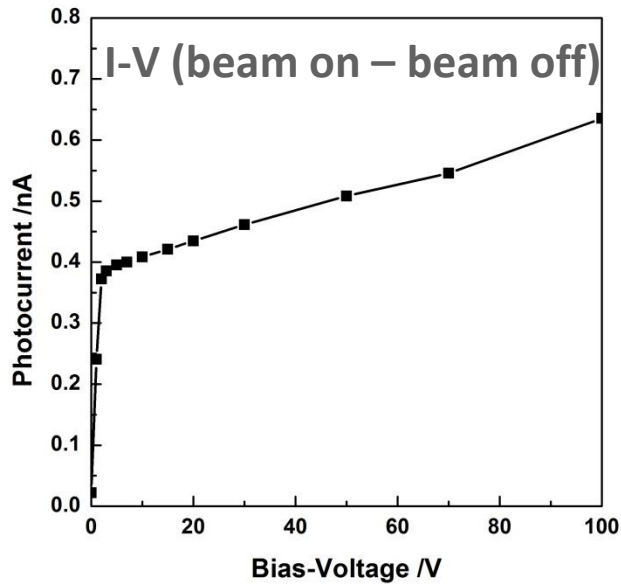
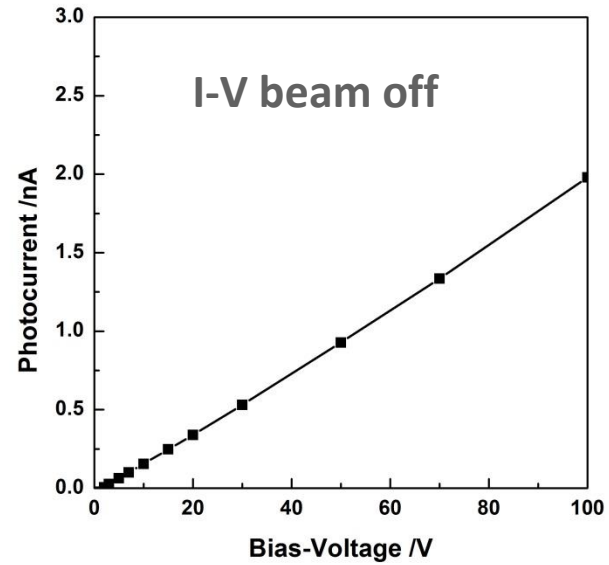
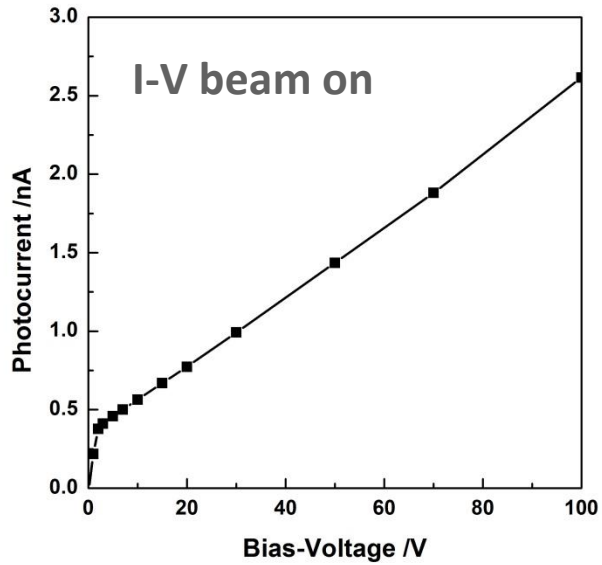


Tube #46 QE

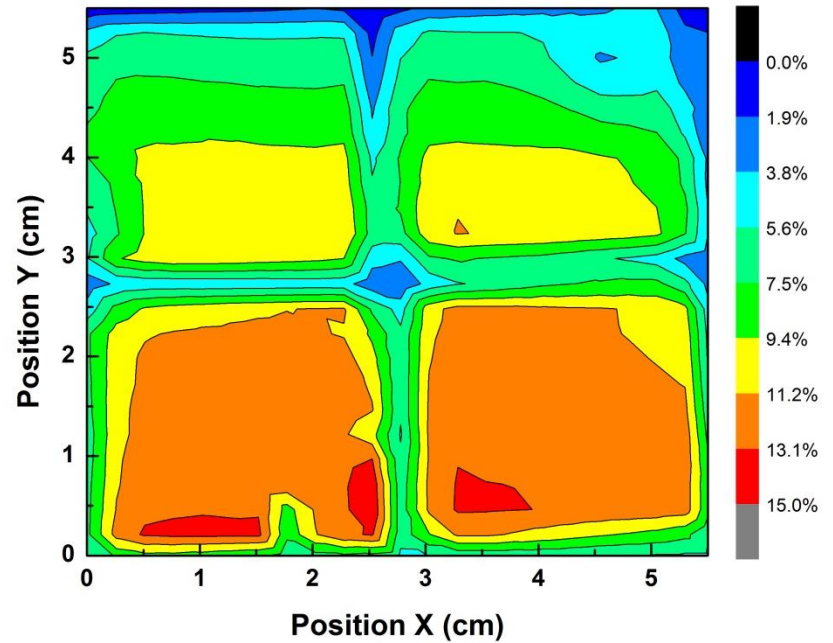
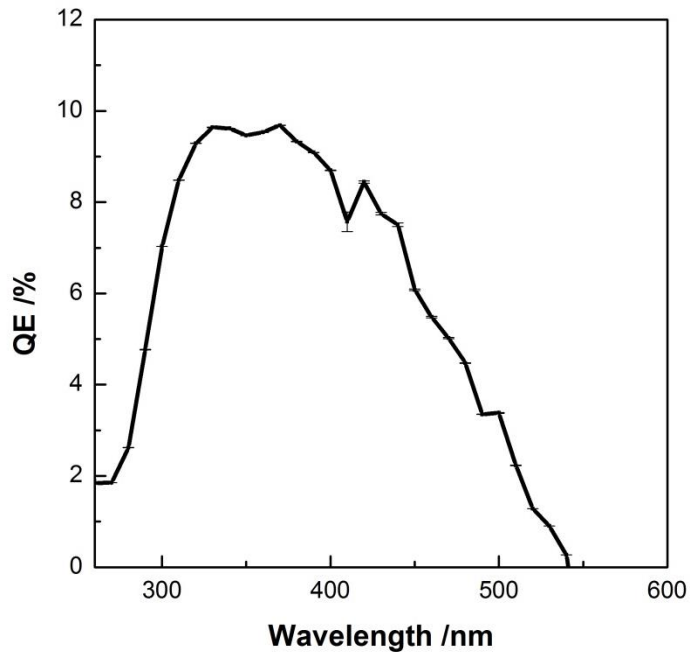
I-V curve (1st day)



Spacer glass resistance = $5 \times 10^{10} \Omega$



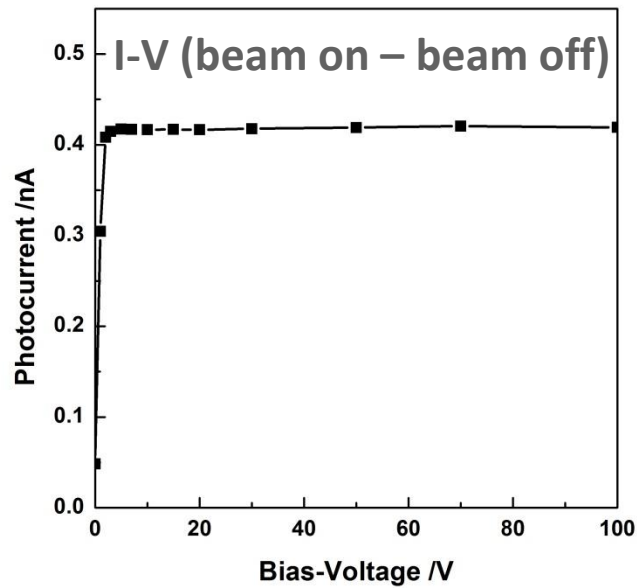
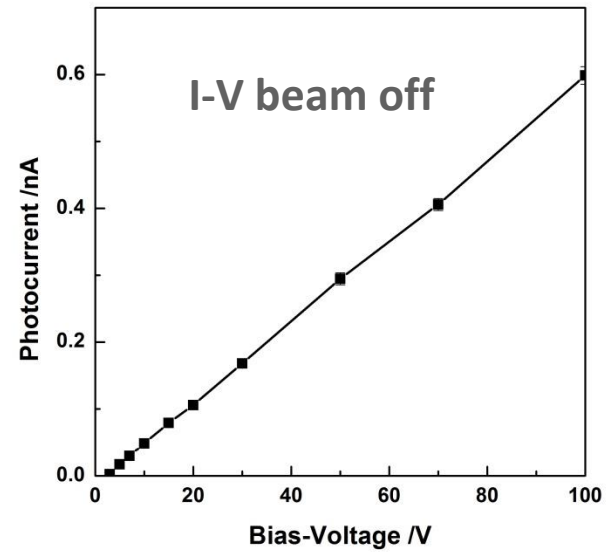
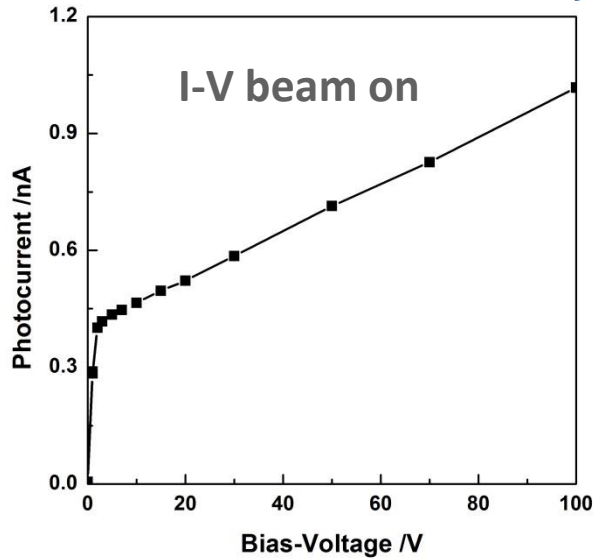
QE vs. wavelength and Map (1st day)



- QE is higher than tube #44 & #45
- Uniformity is not good
- Average QE ~12% on 1st day.



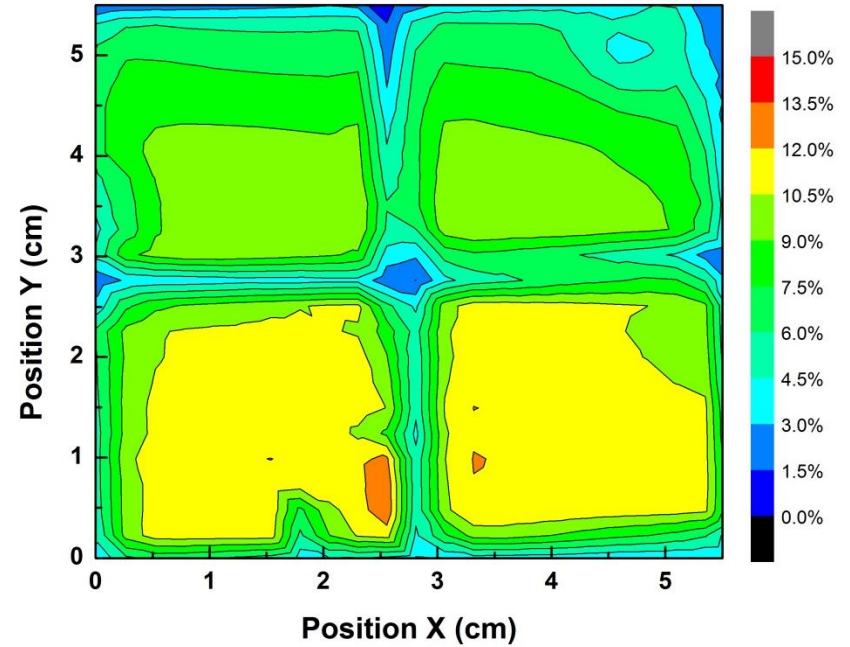
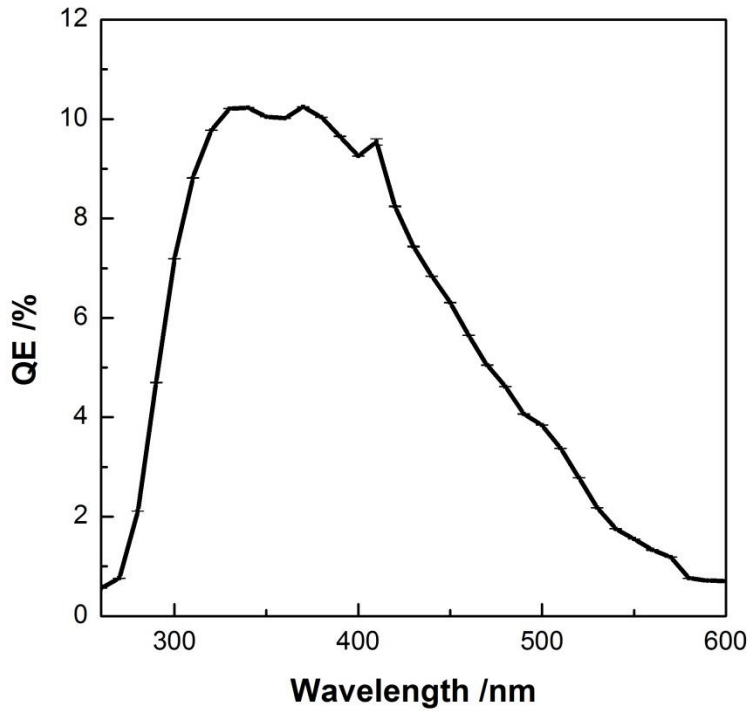
I-V curve - 2nd day



Spacer glass resistance = $1.7 \times 10^{11} \Omega$



QE vs. wavelength and Map (2nd day)



Average QE reduces to ~10 %

