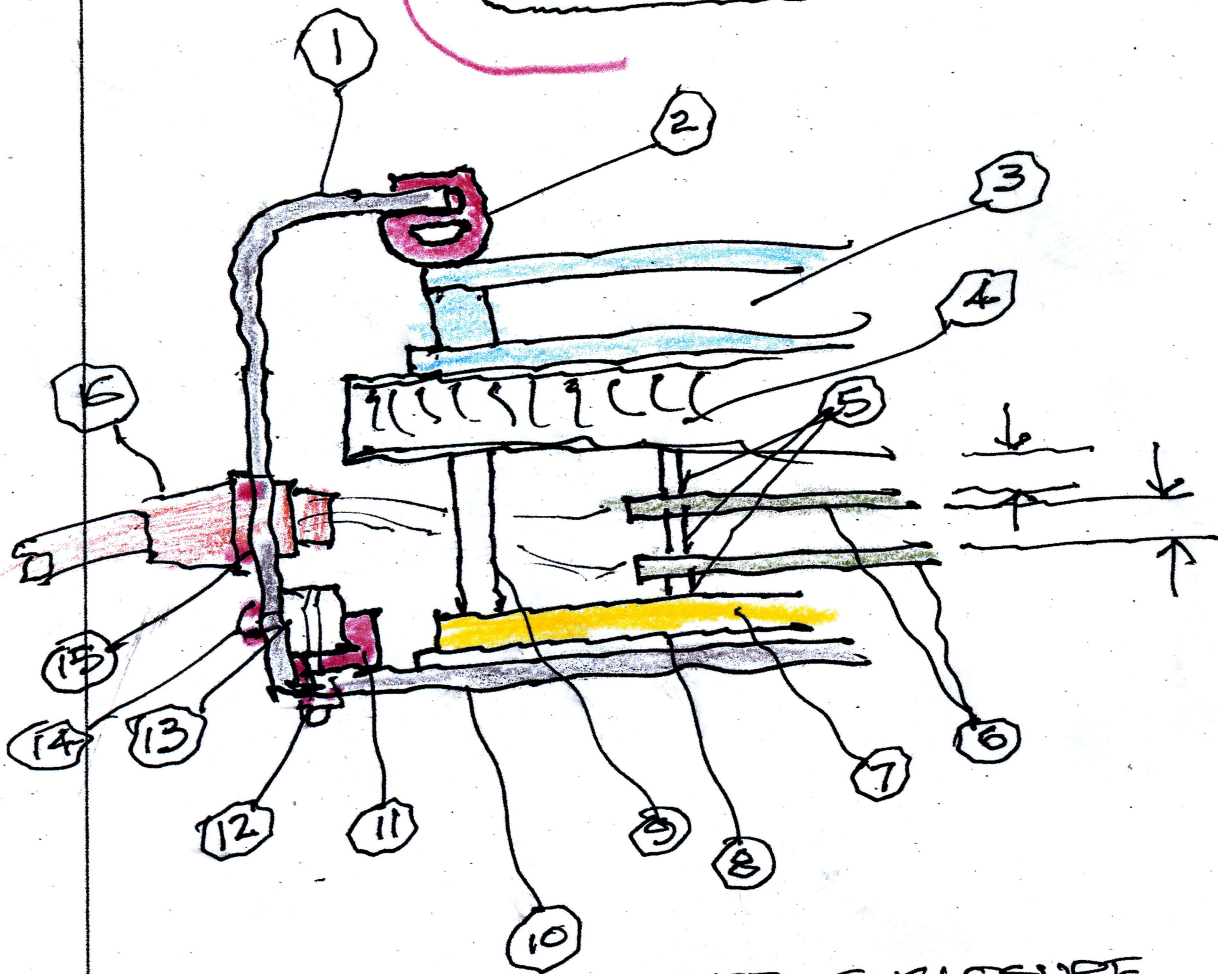


# ALUM. ENCL. DESIGN



1. ZERO ENCLOSURE
2. BULB/LIP SEAL
3. MCP
4. HONEYCOMB
5. PCB STANDOFF
6. ELECT.
7. ALUM PLATE
8. RUBBER
9. STANDOFF
10. ALUM BASE
11. RUBBER GASKET
12. O-RING SEAL SCREW
13. MOUNT BAR
14. O-RING SEAL SCREW
15. BULKHEAD SEAL FITTING
16. FLEXIBLE CONDUIT